

Furoid identification guide



Bladder wrack
Fucus vesiculosus

Flat fronds with air bladders in pairs either side of the distinct midrib. On more exposed shores, there may be less air bladders on the fronds and they may not always occur in pairs.

This should be the dominant furoid algae in your quadrats.



Spiral wrack
Fucus spiralis

Spirally twisted fronds with smooth edges and a prominent mid-rib. The twisted frond has no air bladders but may have reproductive bodies on tips.
If the area you are in is dominated by this algae, you are too high on the shore



Serrated wrack
Fucus serratus

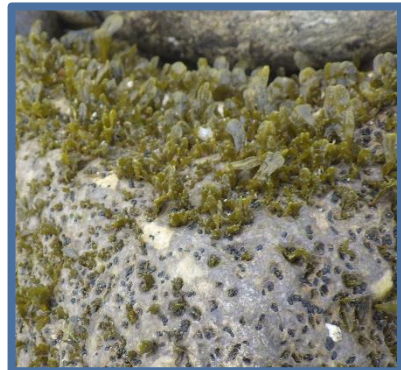
Flat fronds with teeth like serrations. Dichotomously branched with distinct midrib and no airbladders.
If the area you are in is dominated by this algae, you are too low on the shore



Egg wrack
Ascophyllum nodosum

Leathery texture with long strap-like fronds and no mid-rib. Egg-shaped air bladders feature along the middle of the frond. Reproductive bodies are rounded and on short stalks.

If there is lots of egg wrack, the shore is too sheltered for this survey



Juvenile furoid algae
Fucus spp.

Flat, brown fronds only a few centimetres in length. Sometimes looks a bit like just the tips of adult furoid algae. If you are unsure, take a photo and ask your hub team.